

OXYGEN GAGE - MAINTENANCE PRACTICES

1. General

- A. The oxygen gage is mounted in the overhead console.

2. Oxygen Gage Removal/Installation

- A. Remove Oxygen Gage (Refer to Figure 201).

NOTE: The system does not have to be discharged before removing high-pressure lines as there is a check valve in the regulator to shut off the flow of oxygen when a connection is broken.

- (1) Remove overhead console to gain access to oxygen gage.
- (2) Remove fuel selector valve handles.
- (3) Remove knobs (10).
- (4) If installed, remove the LED panel. Refer to Overhead Console LED Panels - Removal/Installation.
- (5) Remove screws securing clear panel allowing access to the oxygen gage (1).
- (6) Remove screws (12) securing retainer (3).
- (7) Remove screw (4) securing retainer (3) to oxygen gage (1).
- (8) Disconnect capillary line (2) from gage (1).
- (9) Remove gage from overhead console area.

- B. Install Oxygen Gage (Refer to Figure 201).

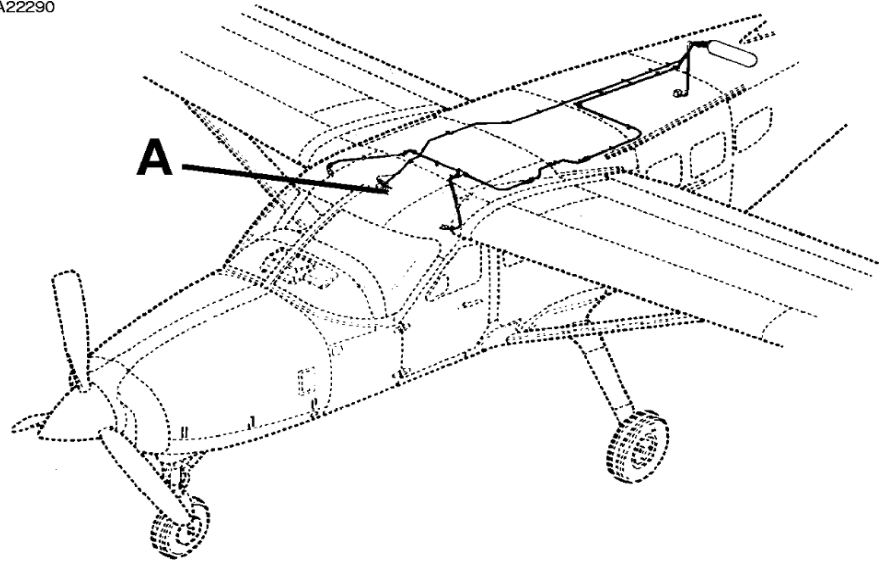
- (1) Position oxygen gage (1) in overhead console area.
- (2) Connect capillary line (2) to gage (1).
- (3) Install screw (4) securing retainer (3) to oxygen gage.
- (4) Install screws (12) securing retainer.
- (5) Position clear panel and install screws.
- (6) If removed, install the LED panel. Refer to Overhead Console LED Panels - Removal/Installation.
- (7) Install knobs (10) and secure using screw (11).
- (8) Install fuel selector valve handles.
- (9) Position and secure overhead console.
- (10) Install overhead console floodlights.

3. Inspection of Gage

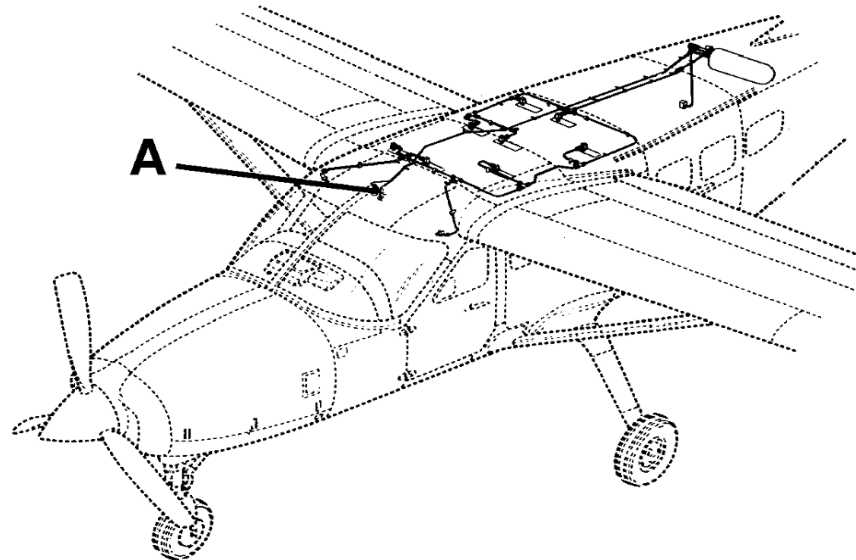
- A. The only inspection possible is to observe indicated pressure rise as the system is charged and decrease as oxygen is bled off.

Figure 201 : Sheet 1 : Oxygen Gage and Control Valve Installation

A22290

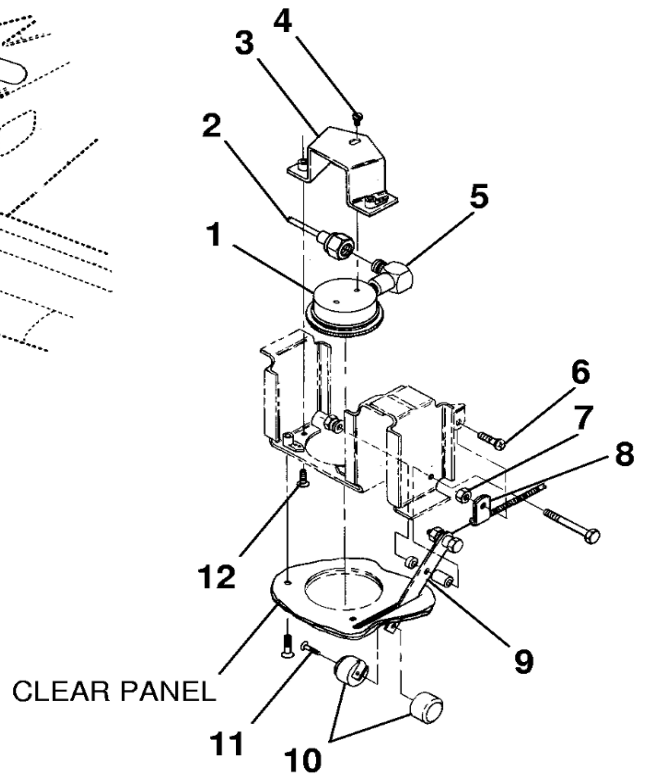


TWO-PORT SYSTEM
 MODEL 208 AND 208B



TEN-PORT SYSTEM
 MODEL 208 ONLY

1. OXYGEN GAGE
2. CAPILLARY LINE
3. RETAINER
4. SCREW
5. ELBOW
6. SCREW
7. NUT
8. CLAMP
9. CONTROL LEVER
10. KNOB
11. SCREW
12. SCREW



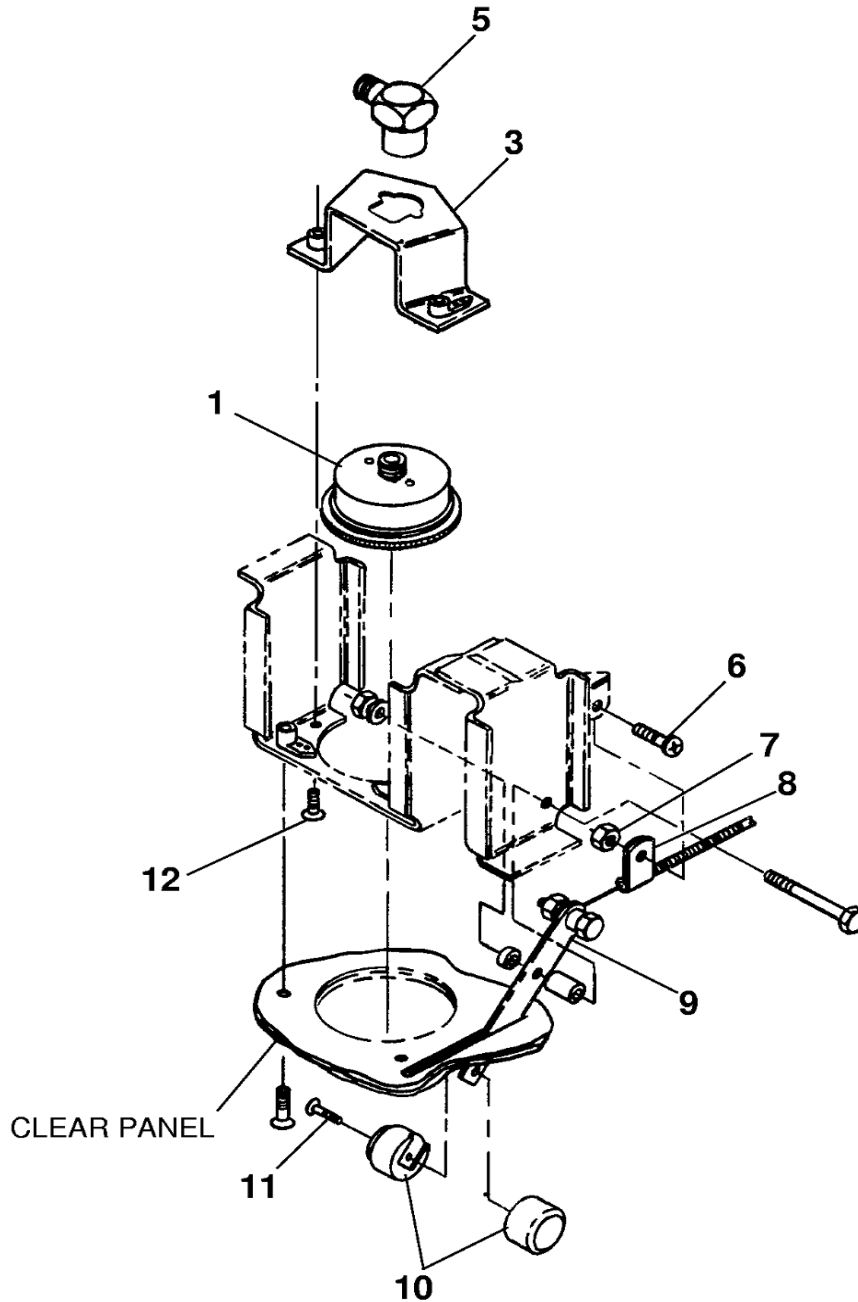
DETAIL A

AIRPLANES 20800001 THRU 20800158
 AND 208B0001 THRU 208B0213

26141043
 26141046
 A26141082

Figure 201 : Sheet 2 : Oxygen Gage and Control Valve Installation

A22291



DETAIL A

AIRPLANES 20800159 AND ON
AND 208B0214 AND ON

26141118